

The Board Talk

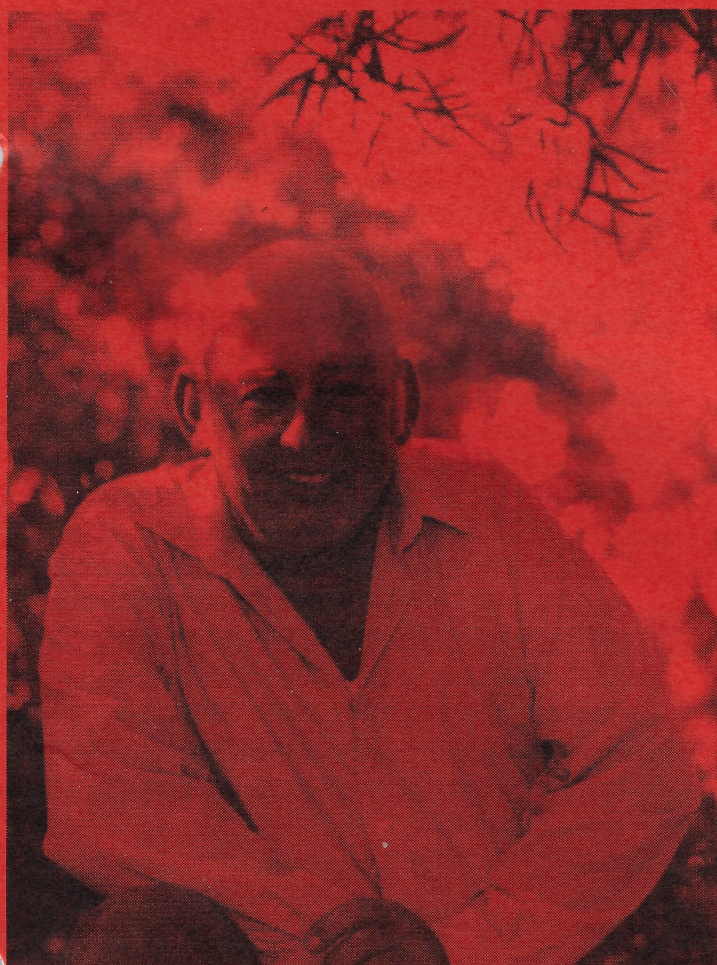
*The Board Talk is published by George & Donna Wilber
421 E. Sheridan Road, Lansing, Michigan 48906; Phone 517-371-2538*

Vol. 12, No. 10

October 1995

"PeeWee" Ramos Inducted into Shuffleboard Hall of Fame

Leonard "PeeWee" Ramos of California, noted for originating the Ramos Rules of Shuffleboard Play several years ago (and still used today in some form at tournaments across the U.S.A. and Canada), has been inducted into the National Shuffleboard Hall of Fame.



Leonard "PeeWee" Ramos

In his announcement of the induction of Ramos, NSHF Chairperson Glen Davidson said: "I have personally known PeeWee and Judy for well over 32 years. PeeWee has been a great supporter of this game for those 32-plus years. From San Diego, California, to Seattle, Washington, he has always been there. In 1970 he came to a tournament I was running in San Diego, the first in California. PeeWee, along with Hal Perry, won that one and many other tournaments such as those in Visalia, Yuba City, Marysville, and at the Black Cat in Portland. In addition to playing, PeeWee always pitched in as director or auctioneer.

"PeeWee played with all the players around San Jose, such as Nicky Gomez, Ski, Big 'O' and Little 'O' and Bill Jennings. He also ran or co-directed tournaments at the Happy Hour for Bill Jennings in the '70s. He and his team traveled to Longview, Washington, for several years and played in the doubles and singles.

"In 1963, PeeWee was going to quit playing shuffleboard, but I was able to convince him not to quit -- and he's cussed at me for years for doing that! Just mentioning his name on the West Coast will immediately mean that shuffleboard will be the subject discussed. He was a great player, a very good tournament director, and a very loyal supporter of the game. I would consider him to be one of the greatest shuffleboard players of all time.

"The shuffleboard community is thankful for the opportunity to join together and honor him for his considerable achievements and contributions to The World of Shuffleboard," Glen said.

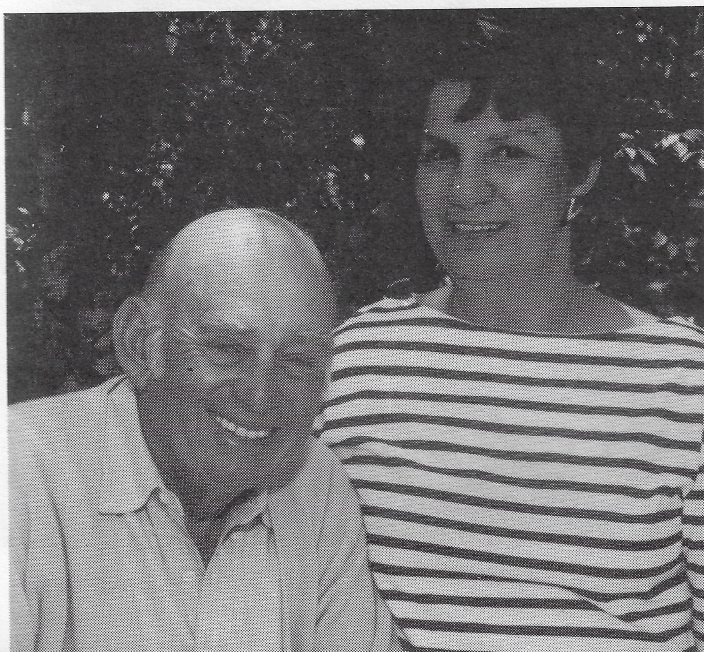
(Editor's Note: It is with a great deal of sadness that, after we received this good news, we must report the death of PeeWee. Hal Perry, a member of the National Shuffleboard Hall of Fame and a close friend of PeeWee, had the opportunity to tell him of his induction just before he passed away.

(continued on Page 7)

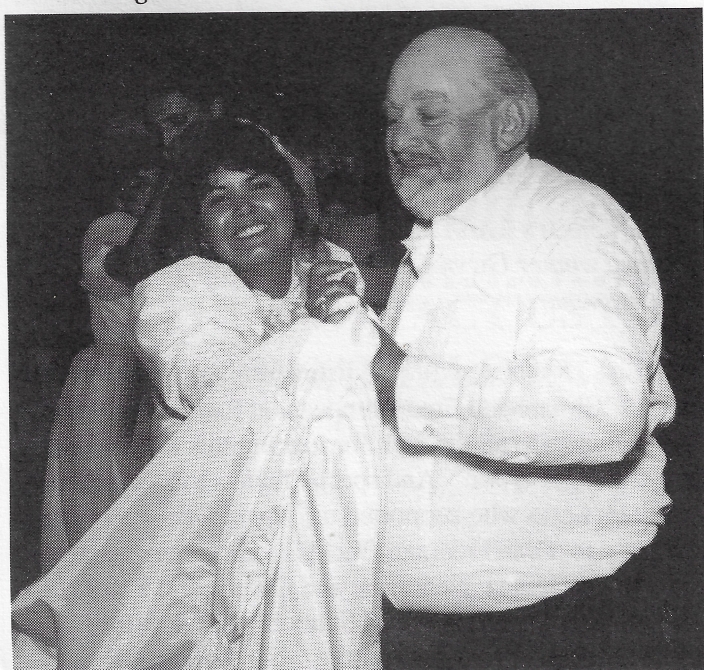
"PeeWee" Ramos Inducted

(continued from Page 1)

Please join us in sending your messages of sympathy to Judy Ramos, 14395 Columbet Ave., San Martin, CA. Consider, too, making a contribution to the National Shuffleboard Hall of Fame in memory of PeeWee. Send to: NSHF Secretary Louise Freer, 189 Barry Ave., Lansdale, PA 19446.)



PeeWee and his wife Judy. In the '80s, PeeWee was honored by The Shuffleboard Federation for developing the Ramos shuffleboard rules and for his lifelong dedication to the game.



Another beautiful member of the Ramos family is Kathy, shown here dancing with Dad at her 1985 wedding. Other children he leaves behind are Joe, Jim and Roseanne.

National Shuffleboard Hall of Fame

We have lost a great shuffleboard player and promoter with the passing of PeeWee Ramos. He deserves to be with Earl Kelly, Bob Miles and Mickey Mickens in the National Shuffleboard Hall of Fame. Our deepest sympathy goes out to Judy and the family of my dear friend. May he rest in peace.

This month's "profile" of our National Shuffleboard Hall of Fame Board of Directors is none other than the Red Baron himself -- Larry Creakbaum of Indiana. Larry has been around this game for 30-40 years and, as far as I know, he is the only player to fly his own plane to and from a tournament.

Larry has won his share of tournaments. He has played with partners like Jim Long, Emmett Wilcox, Bjerne Sunde, Batman, Bobby Voorhis, Dave Boaz, Steve Blue and many more. He won the singles at Houghton Lake two years in a row, recently just before turning 60. Believe me, after 60, it gets harder and harder to win one.

As far as promoting and supporting the game, he has been everywhere there has been a tournament and he's played in all of them. I think he will be a great representative for the Hall of Fame, as well as representing all the players in his area.

Next month, we'll spotlight Hal Perry of California.

Glen Davidson, Chairman, National Shuffleboard Hall of Fame, 9021 Moon St., Midwest City, OK 73141

**Support the
National Shuffleboard
Hall of Fame
with your ideas and
your financial contributions.**

Send to:

**Louise Freer, Secretary
National Shuffleboard Hall of Fame
189 Barry Ave., Lansdale PA 19446**